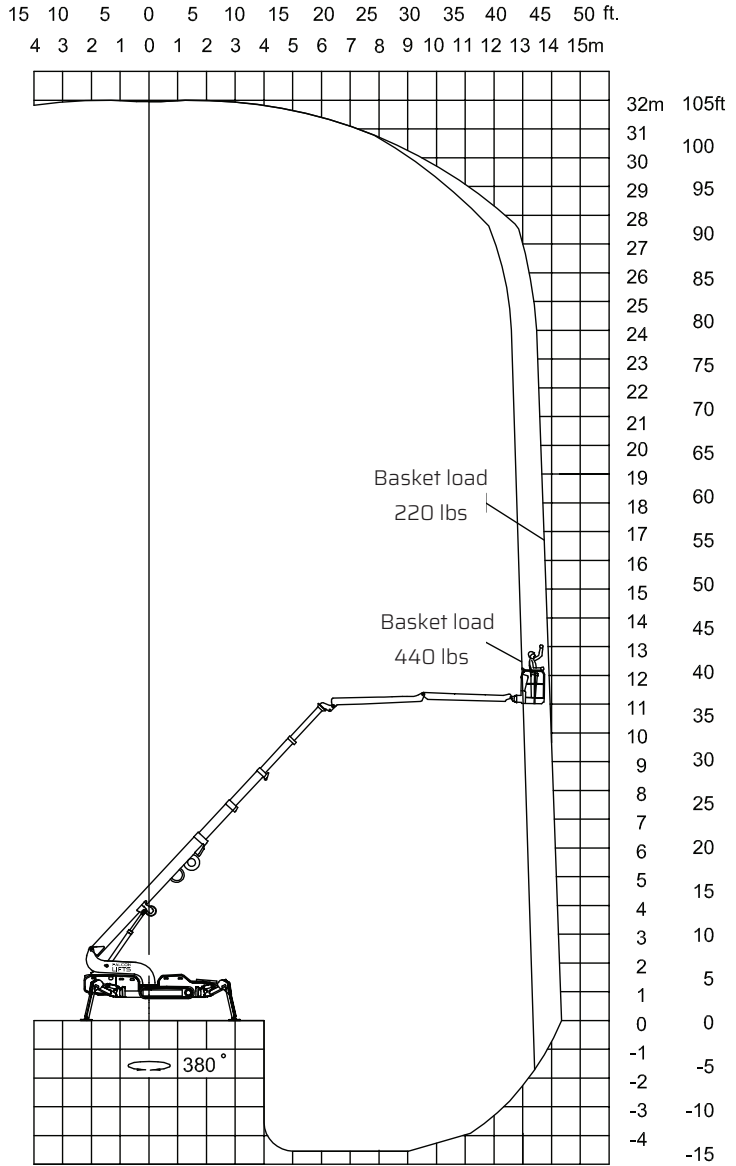
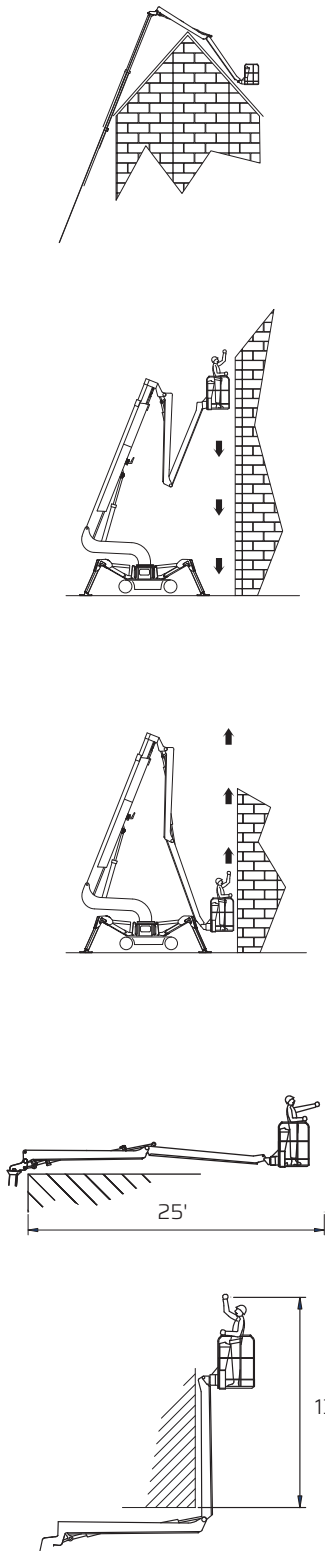


FALCON 105 *Vario*

Reach diagram - Optimized position

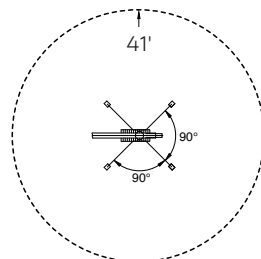


Reach with outriggers in different positions

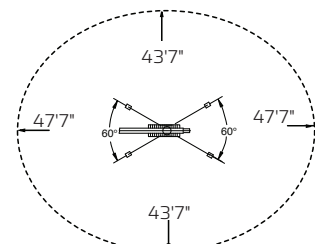
Standard

Measurements in feet

Optimized

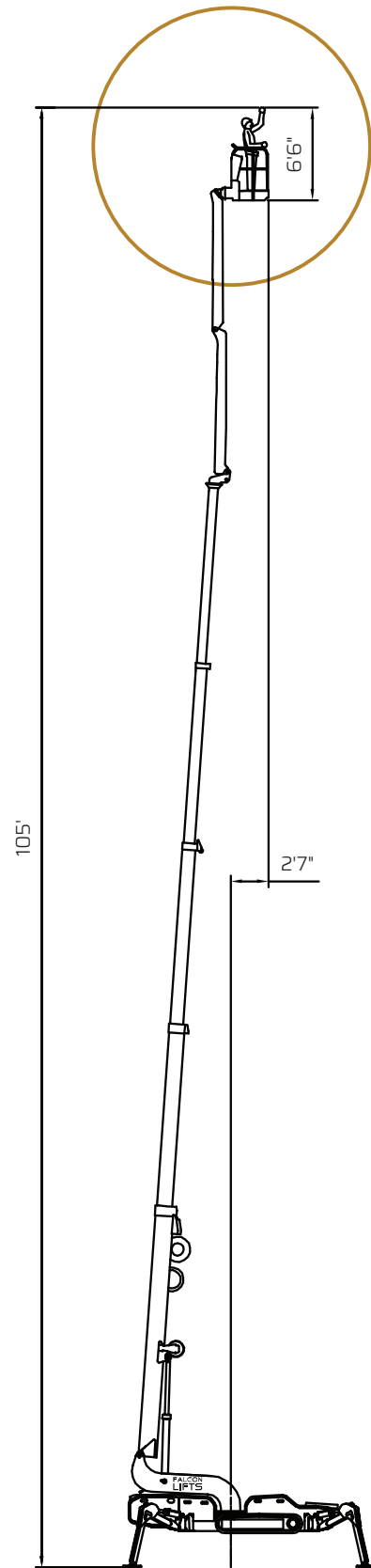


Basket load = 440 lbs

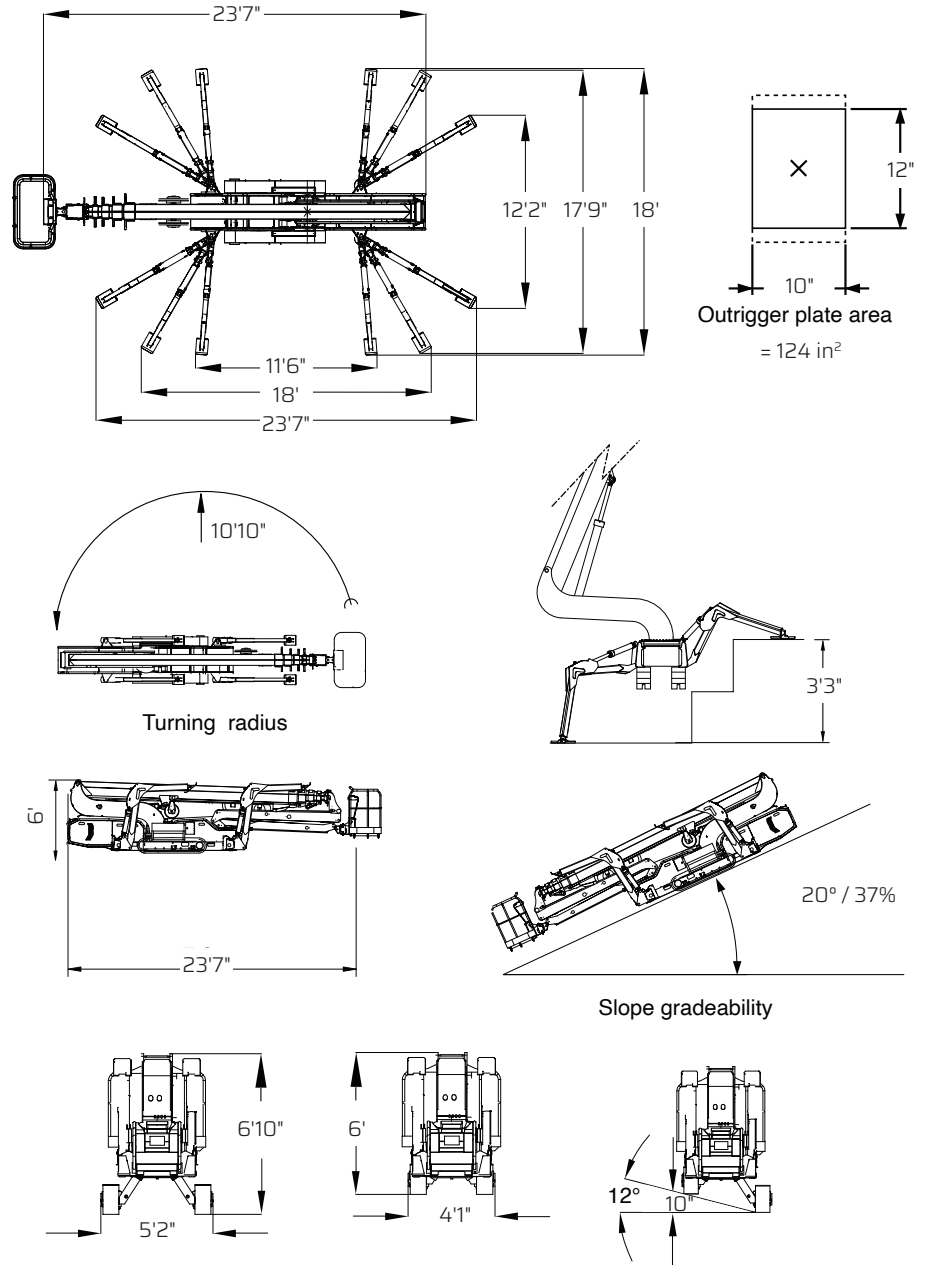


Basket load = 220 lbs

FALCON 105 *Vario*



Outer measurements



Additional info:

Weight and ground pressure:

Weight with standard equipment	12235 lbs
Surface pressure under crawlers (soft surface)	13 PSI
Surface pressure under crawlers (hard surface)	26 PSI
Max. ground pressure under 1 outrigger plate	53 PSI