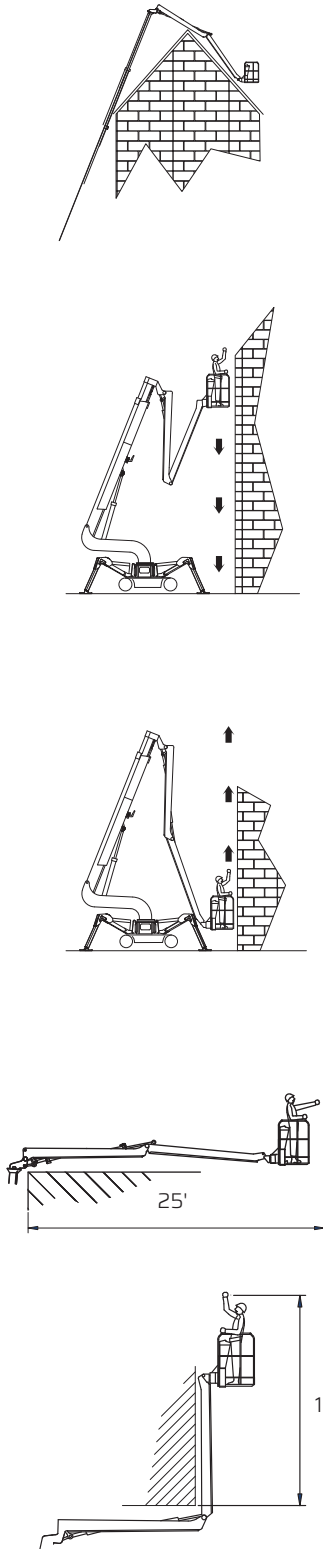
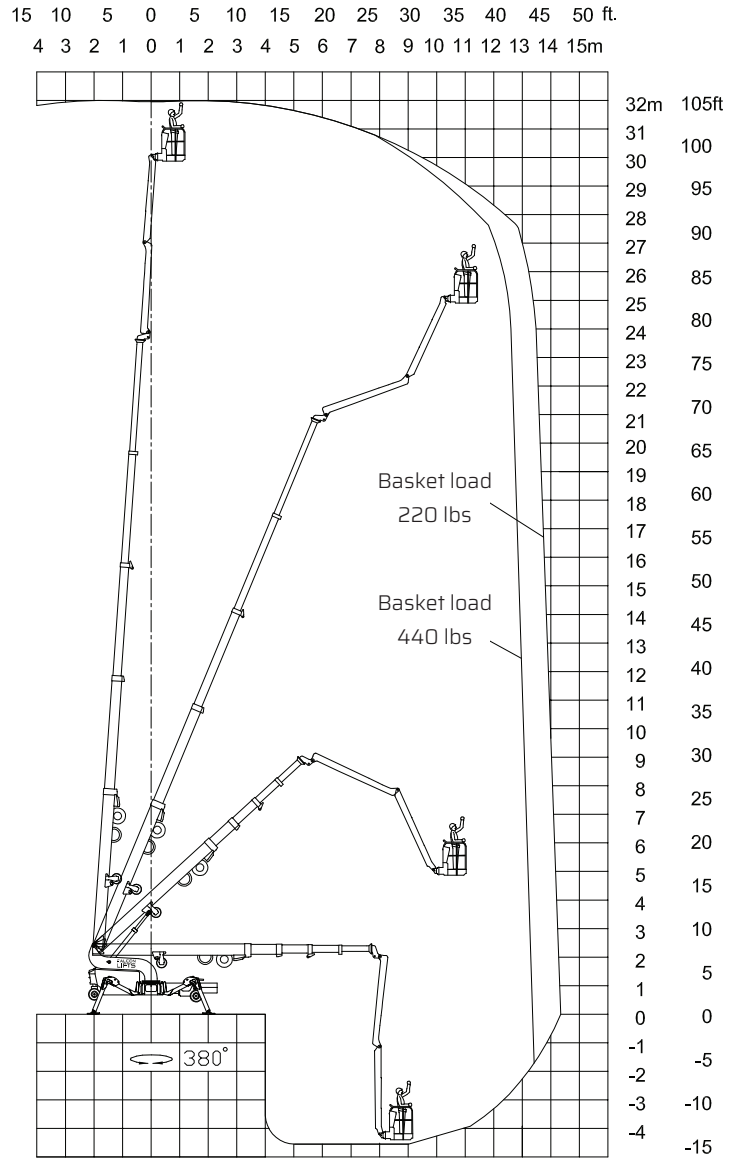
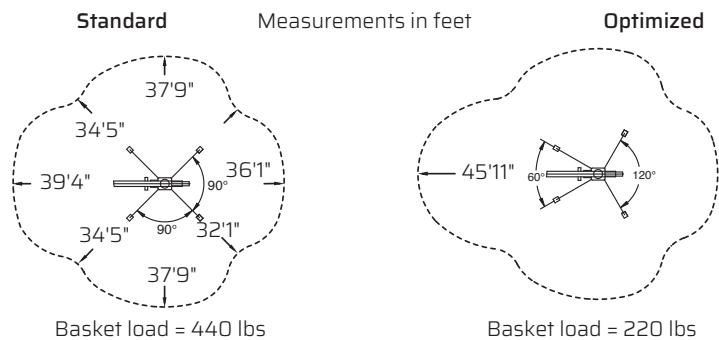


FALCON 105 *Wheel*

Reach diagram - Optimized position

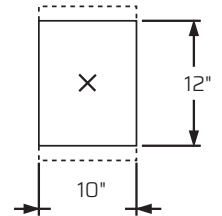
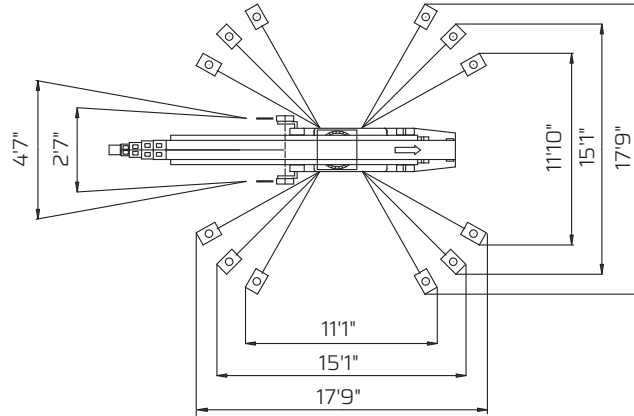
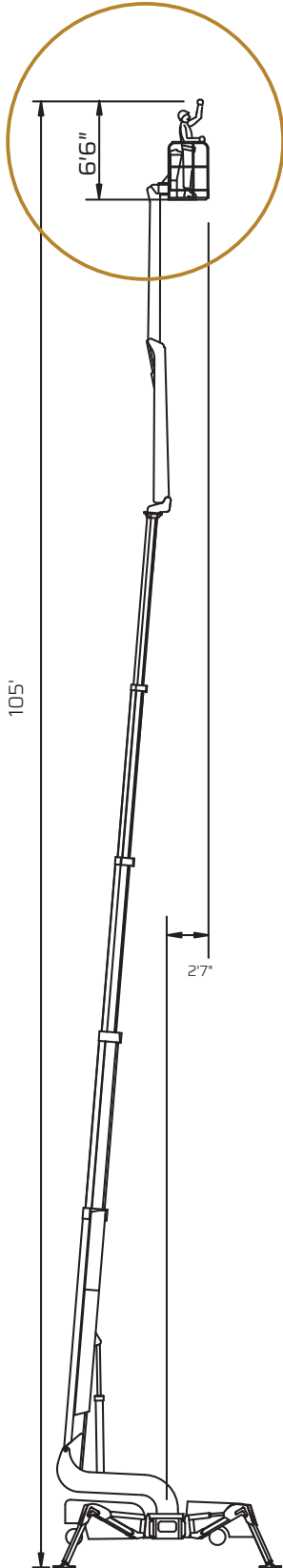


Reach with outriggers in different positions

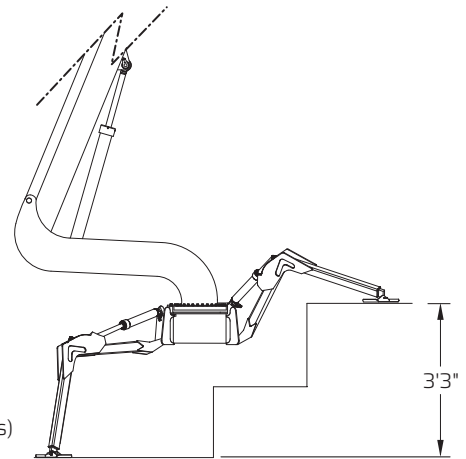
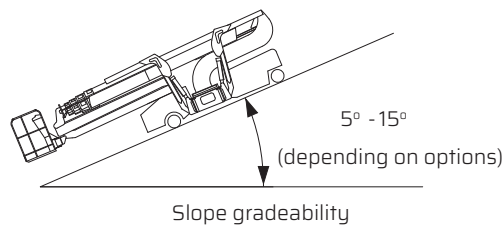
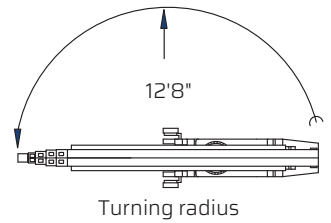
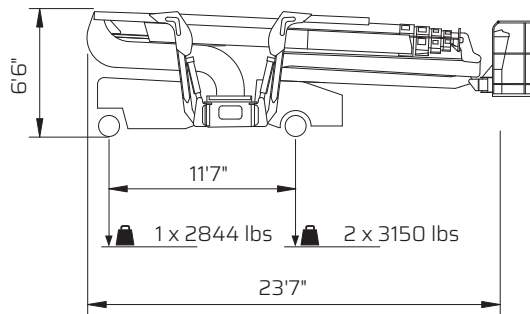


FALCON 105 *Wheel*

Outer measurements



Outrigger plate area
 = 124 in²



Additional info:

Weight and ground pressure:

Weight with standard equipment	9150 lbs
Max. ground pressure under 1 wheel	114 PSI
Max. ground pressure under 1 outrigger plate	41 PSI
Front wheel area (depending on wheel type)	1 x 26 in ²
Rear wheel area (depending on wheel type)	2 x 28 in ²

As all our products are in a constant process of development we reserve the right to alterations