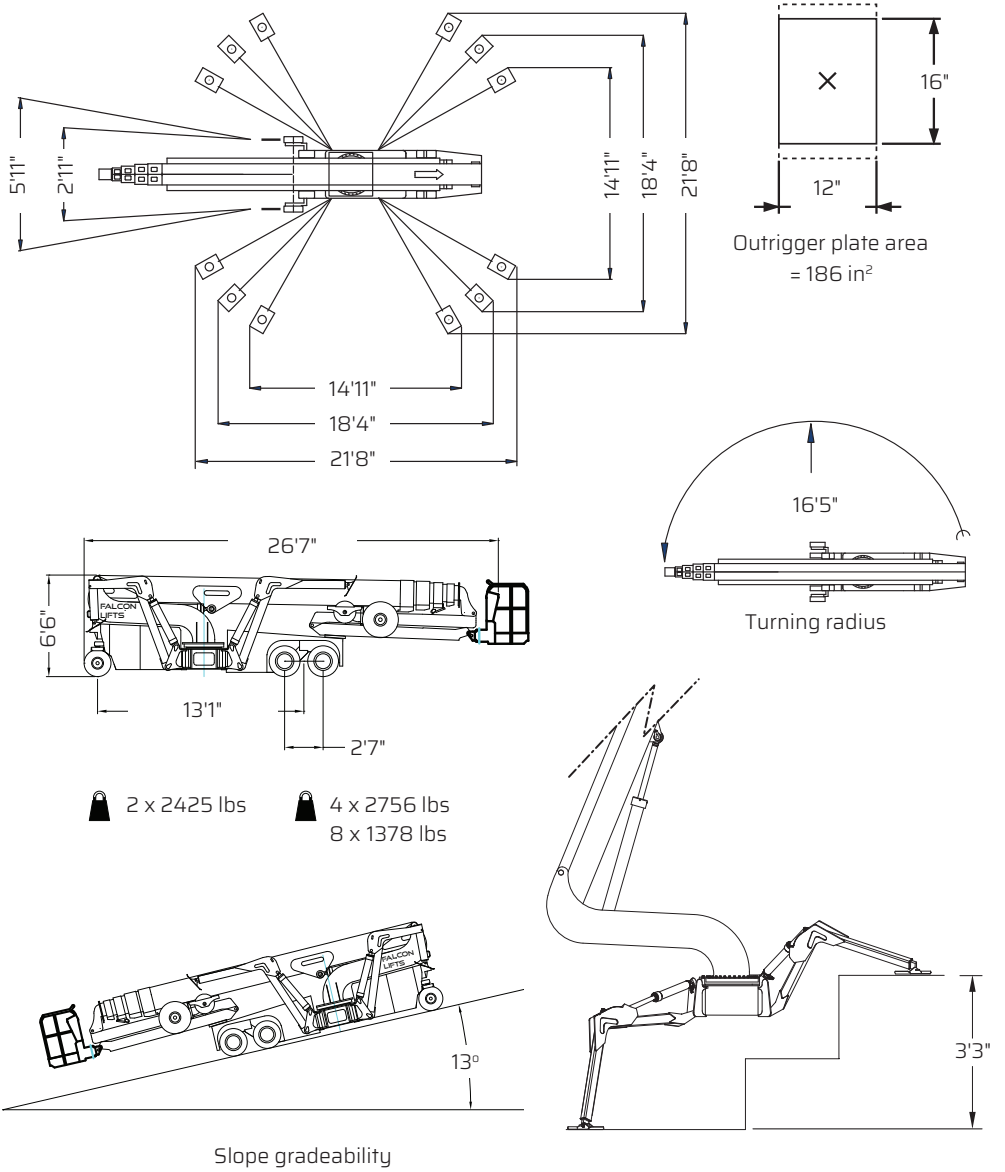
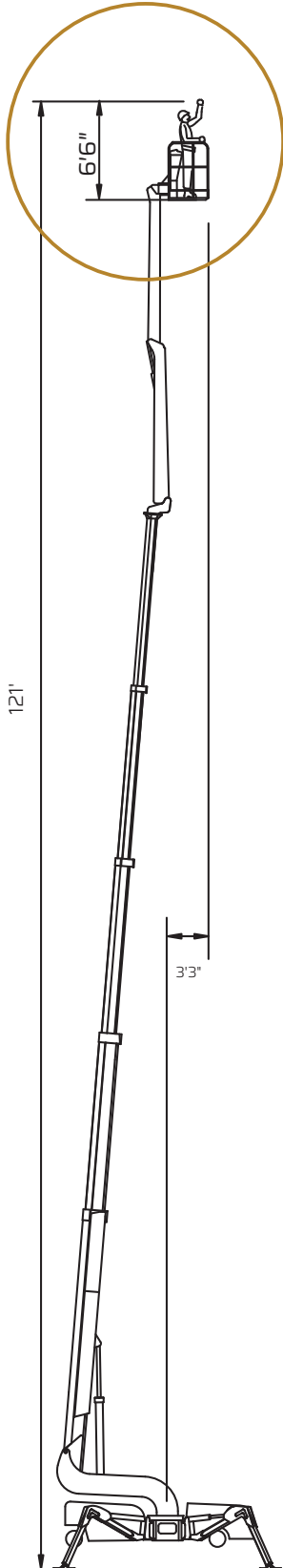


FALCON 121 *Wheel*

Outer measurements



Additional info:

Weight and ground pressure:

Weight with standard equipment (solid tires) Bogie	15650	lbs
Max. ground pressure under 1 wheel (with 4 rear wheel)	85	PSI
Max. ground pressure under 1 wheel (with 8 rear wheel)	73	PSI
Max. ground pressure under 1 outrigger plate	39	PSI
Front wheel area (depending on wheel type)	2 x 33	in ²
Rear wheel area (depending on wheel type)	4 x 33	in ²

As all our products are in a constant process of development we reserve the right to alterations.