



EXCLUSIVE

SPIDER LIFTS AT A HIGHER LEVEL FOR 40 YEARS

FALCON 105 *Vario*





The ultimate compact platform

The Falcon Spider Atrium Lift is an original Falcon Spider Lift with market leading features. The Falcon Spider Atrium Lift was invented in the 1970's, and developed ever since. The Falcon Spider Atrium Lift FALCON 105 Vario is very applicable in matters of:

- Facility management
- Atrium access
- Narrow access
- Best quality & safety
- Double jib system
- Easy transport & propelling
- Low weight & ground pressure
- Flexible outrigger setting
- Limited setup space
- Variable track chassis
- Power - Bi-energy Hybrid



The Falcon Spider Atrium Lift is capable of passing through a door opening a mere 4'1" wide and 6 ft high.



WORKHORSE EQUIPMENT
833-686-9300
info@workhorseequipment.com

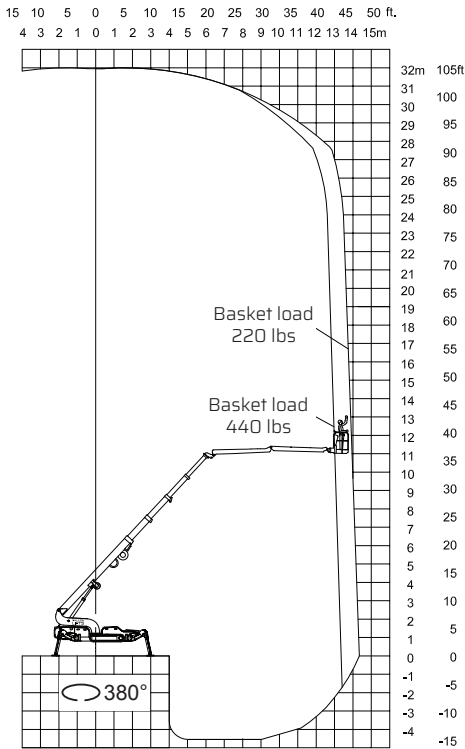


WORKHORSE EQUIPMENT
 833-686-9300
 info@workhorseequipment.com



Model: **FALCON 105 Vario**

FALCON 105 Vario



Working height:	105 ft
Maximum reach:	46 ft
Double jib (2 x 10'):	20 ft
Jib rotation:	200°
Basket load:	440 lbs
Aluminium basket:	(2'7" x 4'7")
Basket rotation (option):	+/- 90°
Turret rotation:	380°

Dimensions (transport position)

Total height:	6' - 6'10"
Total length:	23'7"
Total width:	4'1" - 5'2"
Gradability (standard):	20° / 37%
Weight approx.:	12180 lbs*

*Depending on optional equipment



Working height and reach.



WORKHORSE EQUIPMENT
833-686-9300
info@workhorseequipment.com

STANDARD EQUIPMENT:

- Automatic stability & outreach control
- Computer controlled (can-bus)
- Proportional control of all functions
- Self-propelled
- Battery powered with charger (180 Ah)
- Double jib
- 380° turret rotation, with integrated stop
- Individual setting of each outrigger
- Electronic checking of the power system (PLC)
- Manual pump system for emergency lowering
- Ability to self-load onto trucks or trailers
- Height adjustable tracks
- Adjustable tracks 4'1" - 5'2"
- Minimum width only 4'1"
- Space for tools etc. in basket
- Storage room with lock in chassis
- Diesel engine Kubota 3 cyl. 19 kW
- Wireless remote control of all functions
- Service tool (Remote access via laptop)
- Non marking tracks
- Slope alarm

OPTIONS:

- +/-90° basket rotation
- 110V AC power supply in the basket
- Air / water supply in the basket
- Sensor system on basket
- 4 pcs extra batteries
- Autosetting/levelling
- Dust Cover for Storage
- Special outrigger footplates
- Basket in various sizes
- Anemometer wind warning system
- Special color
- GSM module for remote access and monitoring
- Anti entrapment device

WORKHORSE EQUIPMENT
833-686-9300
info@workhorseequipment.com