



EXCLUSIVE

SPIDER LIFTS  
AT A HIGHER LEVEL  
FOR 40 YEARS

FALCON 121 / FALCON 138 *Double Track*







PHOTO MANIMAGAZINE

## The ultimate compact platform

Compact design, flexibility, minimum weight, maximum reach and safety are qualities which users of the Falcon Spider Atrium Lift series appreciate in their daily work.

The Falcon Spider Atrium Track Lifts FALCON 121/138 Double Track are original Falcon Spider Lifts with market leading features. The Falcon Spider Atrium Track Lifts FALCON 121T/138 Double Track have a 121'-138' working height, and are designed as double track models.

The Falcon Spider Atrium Lift was originally invented in the 1970's, and developed ever since. The Falcon Spider Atrium Track Lifts FALCON 121/138 Double Track are very applicable in matters of:

- Facility management
- Atrium access
- Narrow access
- Best quality & safety
- Double jib system

- Easy transport & propelling
- Low weight & ground pressure
- Flexible outrigger setting
- Limited setup space
- Power - Bi-energy Hybrid

The Falcon Spider Atrium Track Lifts FALCON 121/138 Double Track are capable of passing through a door opening a mere 3'11" wide and 6'10" high.

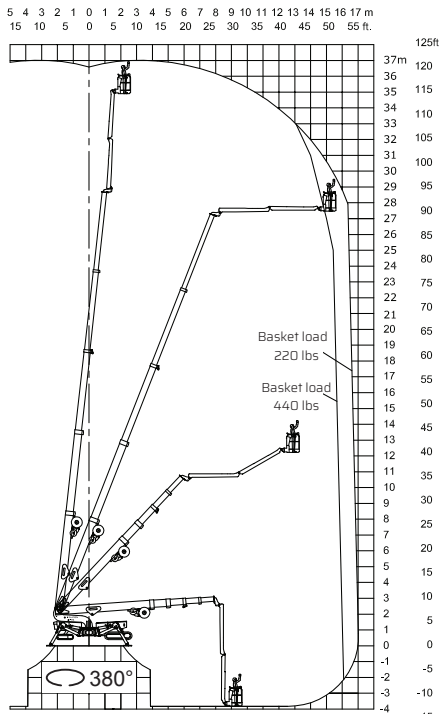
Further details on the Falcon Spider Atrium Track Lifts FALCON 121 / 138 Double Track are mentioned on the following pages.

Features such as the double jib, automatic outrigger positioning, steering of outrigger and chassis from the wireless remote control, turns the Falcon Spider Atrium Lift series into a product category matching the demand of today in regards to speed, usability and safety.

The track version in the Falcon Spider Atrium Lift series is recognised by its impressive driving properties and userfriendliness.



### FS 121 *Double Track*



▲ Working height and reach.

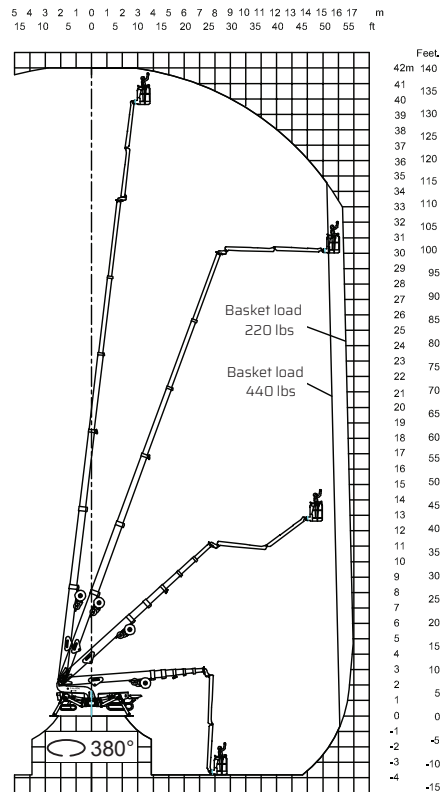


**Model:**

**FALCON 121** *Double Track*

**FALCON 138** *Double Track*

### FS 138 *Double Track*



▲ Working height and reach.

Working height:	121 ft	138 ft
Maximum reach:	55 ft	55 ft
Double jib (2 x 10 ft):	20'	20'
Double jib rotation:	200°	200°
Basket load:	440 lbs	440 lbs
Aluminium basket:	2'7" x 4'7"	2'7" x 4'7"
Basket rotation (option):	+ / - 90°	+ / - 90°
Turret rotation:	380°	380°
 Dimensions (transport position)		
Total height:	6'11"	6'11"
Total length:	26'7"	27'
Total width:	4'	4'
Gradability (standard):	30° / 58%	30° / 58%
Weight approx.:	16535 lbs*	18075 lbs*

\*Depending on optional equipment



WORKHORSE EQUIPMENT  
833-686-9300  
info@workhorseequipment.com

#### STANDARD EQUIPMENT:

- Automatic stability & outreach control
- Computer controlled (can-bus)
- Proportional control of all functions
- Self-propelled
- Battery powered with charger (180 Ah)
- Double jib
- 380° turret rotation, with integrated stop
- Individual setting of each outrigger
- Electronic checking of the power system (PLC)
- Manual pump system for emergency lowering
- Ability to self-load onto trucks or trailers
- Double track system
- Front track section adjustable
- Adjustable track width
- Minimum width only 4ft
- Space for tools etc. in basket
- Storage room with lock in chassis
- Diesel engine
- Wireless remote control of all functions
- Falcon Service Tool (remote access via laptop)

#### OPTIONS:

- +/- 90° basket rotation
- 110V AC power supply in the basket
- Air / water supply in the basket
- Sensor system on basket
- Non marking tracks
- Slope alarm
- 4 pcs extra batteries
- Autosetting/levelling
- Dust Cover for Storage
- Special outrigger footplates
- Basket in various sizes
- Anemometer wind warning system
- Special color
- GSM module for remote access and monitoring
- Anti entrapment device

WORKHORSE EQUIPMENT  
833-686-9300  
info@workhorseequipment.com