



EXCLUSIVE

SPIDER LIFTS
AT A HIGHER LEVEL
FOR 40 YEARS

FALCON 121 *Wheel* / FALCON 138 *Wheel*





The ultimate compact platform

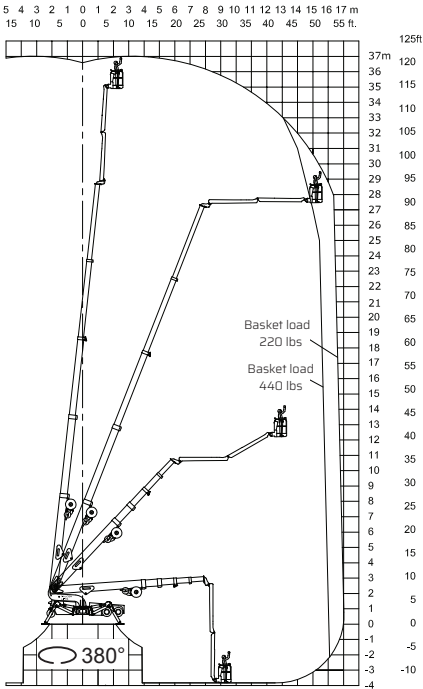
The Falcon Spider Atrium Lift FS 121/138 is an original Falcon Spider Lift with market leading features. These Falcon Spider Atrium Lifts have a 121'-138' working height, and is designed with wheels for smooth propelling and reduced ground pressure. The Falcon Spider Atrium Lift was originally invented in the 1970's, and developed ever since. The Falcon Spider Atrium Lift FALCON 121/138 Wheel is very applicable in matters of:

- Facility management
- Atrium access
- Narrow access
- Best quality & safety
- Double jib system
- Easy transport & propelling
- Low weight & ground pressure
- Flexible outrigger setting
- Limited setup space
- Power - Bi-energy Hybrid

The Falcon Spider Atrium Lift is capable of passing through a door opening a mere 2'11" wide and 6'6".

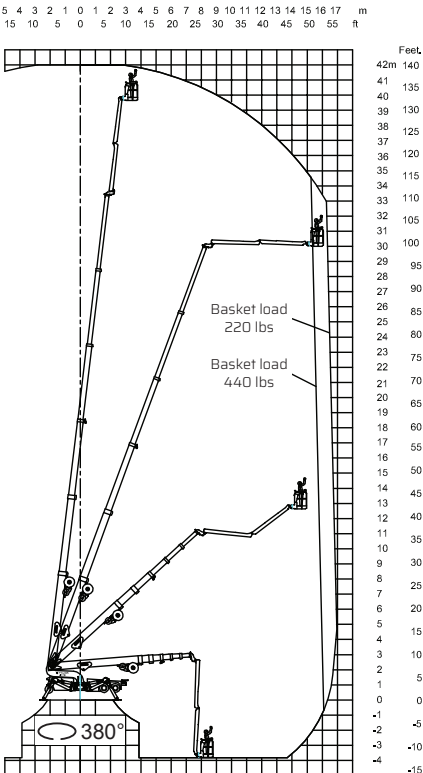
The special designed boogie axle with twin wheels reduces ground pressure and allows driving on sensitive floorings.

FALCON 121 *Wheel*



▲ Working height and reach

FALCON 138 *Wheel*



▲ Working height and reach



Model: **FALCON 121 *Wheel*** **FALCON 138 *Wheel***

Working height:	121 ft	138 ft
Maximum reach:	55 ft	55 ft
Double jib (2 x 10'):	20'	20'
Double jib rotation:	200°	200°
Basket load:	440 lbs	440 lbs
Aluminium basket:	2'7" x 4'7"	2'7" x 4'7"
Basket rotation (option):	+/- 90°	+/- 90°
Turret rotation:	380°	380°
Dimensions (transport position)		
Total height:	6'6"	6'6"
Total length:	26'7"	27'1"
Total width:	2'11"* - 5'11"*	2'11"* - 5'11"*
Gradability (standard):	13° / 23%	13° / 23%
Weight approx.:	15650 lbs*	16975 lbs*

*Depending on optional equipment



WORKHORSE EQUIPMENT
 833-686-9300
 info@workhorseequipment.com

STANDARD EQUIPMENT:

- Automatic stability & outreach control
- Computer controlled (can-bus)
- Proportional control of all functions
- Self-propelled
- Battery powered with charger (360 Ah)
- Double jib
- 380° turret rotation, with integrated stop
- Individual setting of each outrigger
- Electronic checking of the power system (PLC)
- Manual pump system for emergency lowering
- Ability to self-load onto trucks or trailers
- Non marking solid tyres
- Adjustable axle width
- Minimum width only 2'11"
- Space for tools etc. in basket
- Storage room with lock in chassis
- Boogie axle (reduces ground pressure)
- 4-wheel drive (2 axles)
- Wireless remote control of all functions
- Gradability 13° / 23%
- Falcon Service Tool (remote access via laptop)

OPTIONS:

- +/- 90° basket rotation
- 110V AC power supply in the basket
- Air / water supply in the basket
- Sensor system on basket
- Kubota diesel engine, 19 kW
- Anemometer wind warning system
- 4-8 pcs extra batteries
- Autosetting/levelling
- Chassis control from basket
- Special outrigger footplates
- Basket in various sizes
- Slope alarm
- Twin wheels on rear axle
- Special color
- Dust Cover for Storage
- GSM module for remote access and monitoring
- Anti entrapment device

WORKHORSE EQUIPMENT
 833-686-9300
 info@workhorseequipment.com