



EXCLUSIVE

SPIDER LIFTS AT A HIGHER LEVEL FOR 40 YEARS

FALCON 141 *Vario*





The ultimate compact platform

Compact design, flexibility, minimum weight, maximum reach and safety are qualities which users of the Falcon Spider Atrium Lift series appreciate in their daily work.

The Falcon Spider Atrium Crawler Lift FALCON 141 Vario is an original Falcon Spider Lift with market leading features.

The Falcon Spider Atrium Crawler Lift FALCON 141 Vario has a 141 ft working height, and is designed with height adjustable crawlers.

The Falcon Spider Atrium Lift was originally invented in the 1970's, and developed ever since. The Falcon Spider Atrium Crawler Lifts FALCON 141 Vario is very applicable in matters of:

- Facility management
- Atrium access
- Narrow access
- Best quality & safety
- Double jib system

- Easy transport & propelling
- Low weight & ground pressure
- Flexible outrigger setting
- Limited setup space
- Power - Bi-energy Hybrid

The Falcon Spider Atrium Crawler Lift FALCON 141 Vario is capable of passing through a door opening a mere 4'7" wide and 6'5" high. Further details on the Falcon Spider Atrium Lift FALCON 141 Vario is mentioned on the following pages.

Features such as the double jib, automatic outrigger positioning, steering of outrigger and chassis from the wireless remote control, turns the Falcon Spider Atrium Lift series into a product category matching the demand of today in regards to speed, usability and safety.

The crawler version in the Falcon Spider Atrium Lift series is recognised by its impressive driving properties and user friendliness.



WORKHORSE EQUIPMENT

833-686-9300

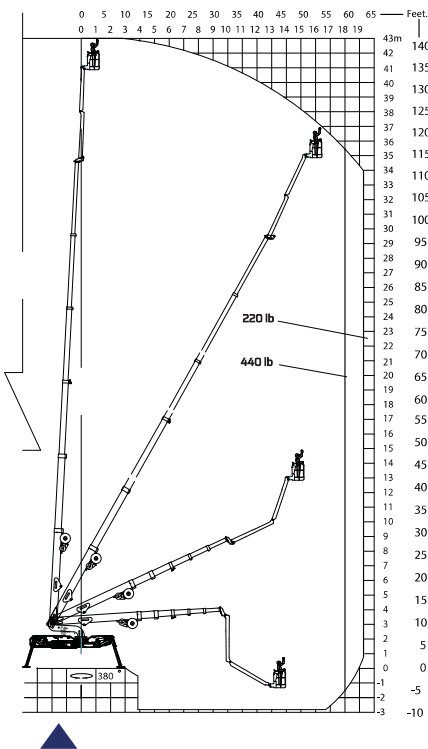
info@workhorseequipment.com



Model:

FALCON 141 Vario

FALCON 141 Vario



Working height and reach.

Working height: 141'1"
 Maximum reach: 54'2" - 60'8"
 Jib rotation: 200°

Basket load: 440 lb

Aluminium basket: (2'7" x 4'7")

Basket rotation: +/- 90°

Turret rotation: 380°

Dimensions (transport position)

Total height: 6'5" - 7'4"

Total length: 27'2"

Total width (min): 4'7" - 5'10"

Gradability (standard): 25° / 47%

Weight approx.: 18387 lb*

*Depending on optional equipment



WORKHORSE EQUIPMENT
833-686-9300
info@workhorseequipment.com

STANDARD EQUIPMENT:

- Automatic stability & outreach control
- Computer controlled (can-bus)
- Proportional control of all functions
- Self-propelled 2 speed selection
- Battery powered with charger 180 Ah
- Double jib
- 380° turret rotation, with integrated stop
- +/- 90° basket rotation
- Ability to self-load onto trucks or trailers
- Electronic checking of the power system (PLC)
- Manual pump system for emergency lowering
- Adjustable track width
- Minimum width only 4'7"
- Space for tools etc. in basket
- Storage room in chassis with lock
- Kubota diesel engine, 3 cyl. 18,5 kW/ 24,8 HP (Tier 4 / EU Stage V)
- Wireless remote control of all functions
- 110V/220V AC power supply in the basket
- Non marking crawlers
- Individual setting of each outrigger
- Falcon Service Tool (remote access via laptop)

OPTIONS:

- Hazard lights kit (strobe lights, working lamp)
- Protection kit (enhanced shields/cover)
- 400V AC Phase 3, 7,5 kW/16A
- Autosetting / Leveling
- Special outrigger footplates
- Special colour
- Service tool
- Anti entrapment system
- Dust Cover for Storage
- GSM module for remote access and monitoring

WORKHORSE EQUIPMENT
833-686-9300
info@workhorseequipment.com