



EXCLUSIVE

SPIDER LIFTS AT A HIGHER LEVEL FOR 40 YEARS

FALCON 170 *Double Track*





The Falcon Spider Atrium Track Lift FALCON 170 Double Track, the worlds tallest compact platform!

Compact design, flexibility, minimum weight, maximum reach and safety are qualities which users of The Falcon Spider Atrium Lift series appreciate in their daily work.

The Falcon Spider Atrium Track Lift FALCON 170 Double Track is an original Falcon Spider Lift with market leading features.

This Falcon Spider Atrium Track Lift FALCON 170 Double Track has a 170' working height, and is designed as a track model.

The Falcon Spider Atrium Lift was originally invented in the 1970's, and developed ever since. The Falcon Spider Atrium Track Lift FS 170T is very applicable in matters of:

- Facility management
- Atrium access
- Narrow access
- Best quality & safety
- Double jib system
- Easy transport & propelling

- Low weight & ground pressure
- Flexible outrigger setting
- High reach performance
- Power - Bi-energy Hybrid

The Falcon Spider Atrium Track Lift FALCON 170 Double Track is capable of passing through a door opening a mere 4'1" wide and 6'11" high. Further details on the Falcon Spider Atrium Track Lift FALCON 170 Double Track are mentioned on the following pages.

Features such as the double jib, automatic outrigger positioning, steering of outrigger and chassis from the wireless remote control, turns the Falcon Spider Atrium Lift series into a product category matching the demand of today in regards to speed, usability and safety.

The Track version in the Falcon Spider Atrium Lift series is recognised by its impressive driving properties, superior boom flexibility and low ground pressure.

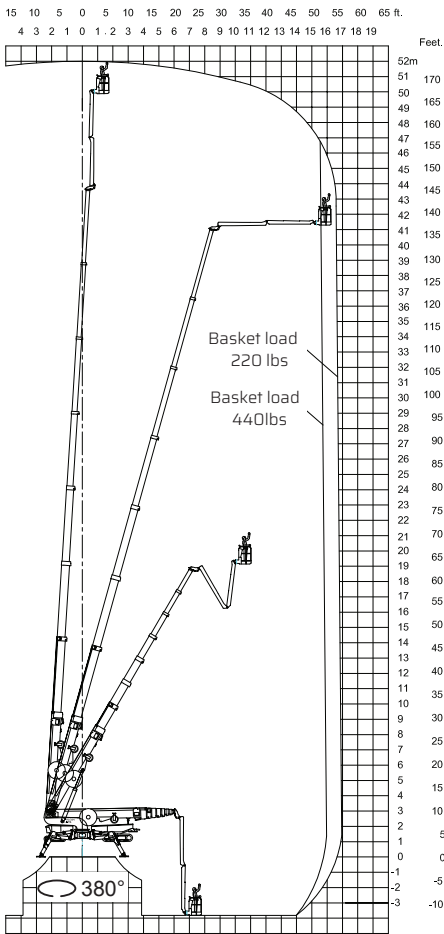


WORKHORSE EQUIPMENT

833-686-9300

info@workhorseequipment.com

FALCON 170 *Double Track*



Working height and reach.



Model:	FALCON 170 <i>Double Track</i>
Working height:	170 ft
Maximum reach:	55'9"
Double jib (2 x 10'):	20 ft
Double jib rotation:	200°
Basket load:	440 lbs
Aluminium basket:	2'7"x4'7"
Basket rotation (option):	+ / - 90°
Turret rotation:	380°

Dimensions (transport position)

Total height:	6'11"
Total length:	30'6"
Total width (min):	4'1"
Total width (max):	5'3"
Gradability (standard):	20° / 37%
Weight approx.:	29750 lbs*

*Depending on optional equipment



WORKHORSE EQUIPMENT
833-686-9300
info@workhorseequipment.com

STANDARD EQUIPMENT:

- Automatic stability & outreach control
- Computer controlled (can-bus)
- Proportional control of all functions
- Self-propelled
- Battery powered with charger (180 Ah)
- Double jib
- 380° turret rotation, with integrated stop
- +/- 90° basket rotation
- Individual setting of each outrigger
- Electronic checking of the power system (PLC)
- Manual pump system for emergency lowering
- Ability to self-load onto trucks or trailers
- Double track system
- Front track section adjustable
- Adjustable Track width
- Minimum width only 4'1"
- Space for tools etc. in basket
- Storage room with lock in chassis
- Diesel engine
- Wireless remote control of all functions
- Falcon Service Tool (remote access via laptop)

OPTIONS:

- 110V AC power supply in the basket
- Air/water supply in the basket
- Sensor system on basket
- Non marking tracks
- Slope alarm
- 4 pcs extra batteries
- Autosetting/levelling
- Dust Cover for Storage
- Special outrigger footplates
- Basket in various sizes
- Special color
- Anemometer wind warning system
- GSM module for remote access and monitoring
- Anti entrapment device

WORKHORSE EQUIPMENT
833-686-9300
info@workhorseequipment.com