



EXCLUSIVE

SPIDER LIFTS AT A HIGHER LEVEL FOR 40 YEARS

FALCON 95 *Wheel* / **FALCON 105** *Wheel*





The ultimate compact platform

The Falcon Spider Atrium Lift is an original Falcon Spider Lift with market leading features. The Falcon Spider Atrium Lift FS 95/105 was invented in the 1970's, and developed ever since. The Falcon Spider Atrium Lift FALCON 95/105 Wheel is very applicable in matters of:

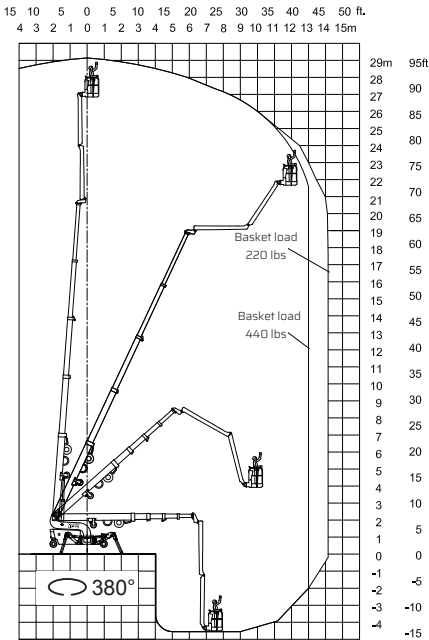
- Facility management
- Atrium access
- Narrow access
- Best quality & safety
- Double jib system
- Easy transport & propelling
- Low weight & ground pressure
- Need for flexible outrigger
- Limited setup space
- Power Bi-energy Hybrid

The Falcon Spider Atrium Lift is capable of passing through a door opening a mere 2'7" wide and 6'6" high. Further details on the Falcon Spider Atrium Lift FALCON 95/105 Wheel is mentioned on the following pages.



WORKHORSE EQUIPMENT
 833-686-9300
info@workhorseequipment.com

FALCON 95 *Wheel*

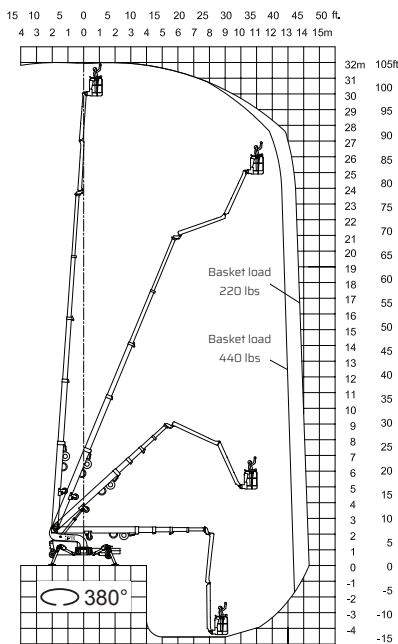


▲ Working height and reach



Model: **FALCON 95 *Wheel*** **FALCON 105 *Wheel***

FALCON 105 *Wheel*



▲ Working height and reach

Working height:	95 ft	105 ft
Maximum reach:	46 ft	46 ft
Double jib (2 x 10"):	20'	20'
Doublejib rotation	200°	200°
Basket load:	440 lbs	440 lbs
Aluminium basket:	2'7"x4'7"	2'7"x4'7"
Basket rotation (option):	+ / - 90°	+ / - 90°
Turret rotation:	380°	380°

Dimensions (transport position)

Total height:	6'6"	6'6"
Total length:	20'8"	23'7"
Total width:	2'7" - 2'11"*	2'7" - 2'11"*
Gradability (standard):	5° / 10%	5° / 10%
Weight approx.:	8270 lbs*	9150 lbs*

*Depending on optional equipment



WORKHORSE EQUIPMENT
833-686-9300
info@workhorseequipment.com

STANDARD EQUIPMENT:

- Automatic stability & outreach control
- Computer controlled (can-bus)
- Proportional control of all functions
- Self-propelled
- Battery powered with charger (180 Ah)
- Double jib
- 380 ° turret rotation, with integrated stop
- Individual setting of each outrigger
- Electronic checking of the power system (PLC)
- Manual pump system for emergency lowering
- Ability to self-load onto trucks or trailers
- Non marking solid tyres
- Adjustable wheel-axle
- Minimum width only 2'7"
- Space for tools etc. in basket
- Storage room with lock in chassis
- Wireless remote control of all functions
- Falcon Service Tool (Remote access via laptop)

OPTIONS:

- +/- 90 ° basket rotation
- 110V AC power supply in the basket
- Air/water supply in the basket
- Sensor system on basket
- Diesel engine, Hatz "Silent pack" 9 kW
- Honda petrol generator 3,0 kW
- 4-8 pcs. extra batteries
- Autosetting/levelling
- Dust Cover for Storage
- Special outrigger footplates
- Basket in various sizes
- Slope alarm
- 2 wheel drive (10 °/18 % climb)
- 3 wheel drive (15 °/26 % climb)(width 3'1")
- Twin wheels on rear axle
- Special color
- Anti entrapment device
- GSM module for remote access and monitoring

WORKHORSE EQUIPMENT
833-686-9300
info@workhorseequipment.com